



MIRACLES OF HIGH FIDELITY

400.075

RENAULT V.I.

Models
MS1370

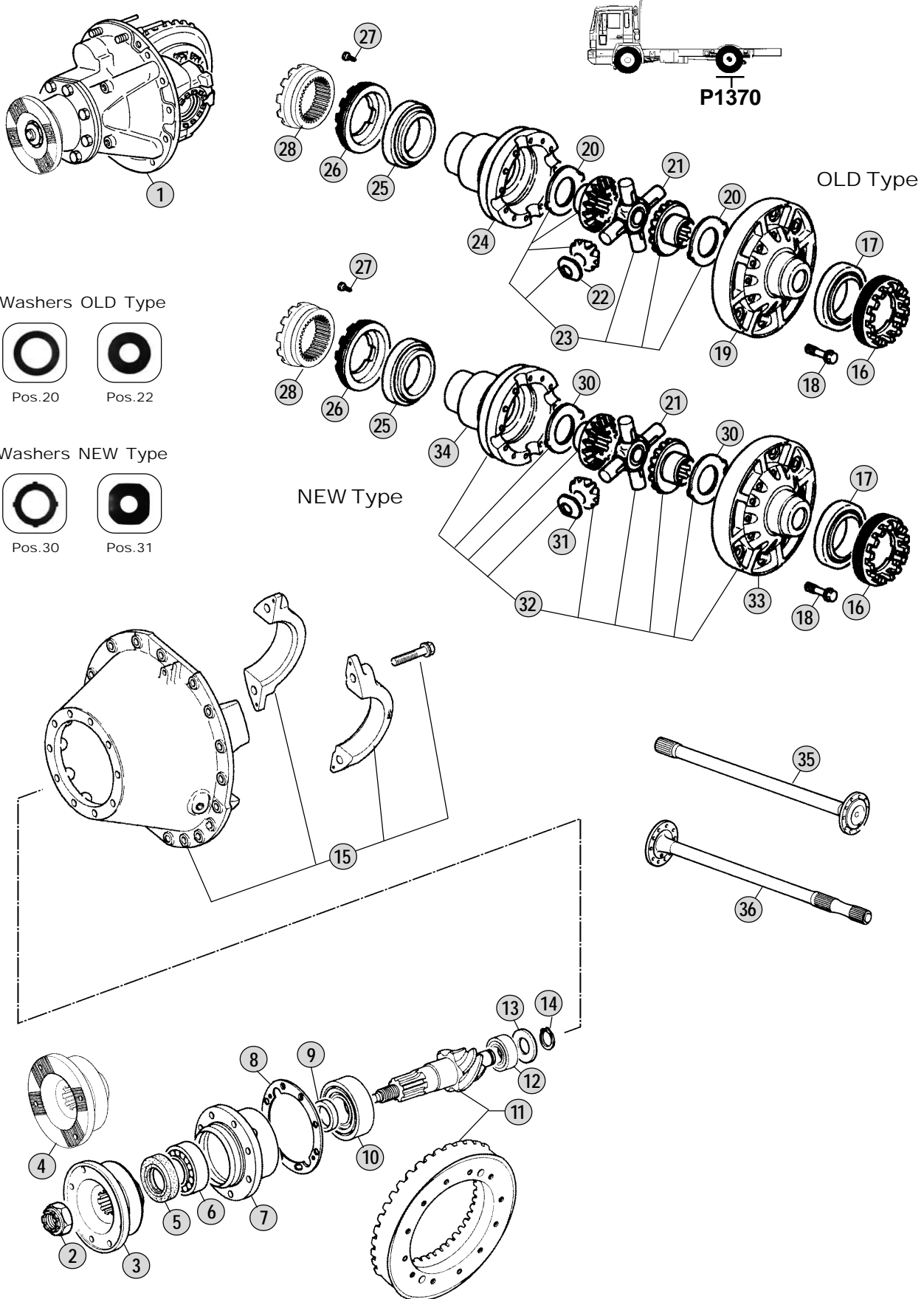
Date
06/2008
File
RV10011.Pdf



HIGH FIDELITY SPARE PARTS

Adattabile a : **RENAULT V.I.**
 Suitable To :

P1370



All original equipment manufacturers' numbers, symbols, models and description used in this catalogue are for reference only, and it is not implied that any part listed is the product of these manufactures.
 Tutti i nostri particolari non sono originali ma con essi intercambiabili. I riferimenti originali, le figure, i modelli sono esposti a semplice titolo indicativo. La nostra produzione riporta il nostro marchio.

Models

PREMIUM - MAGNUM

FAB 22A (>>2000) / FAB 22E(>>2000) / FAB 22EE (>>2001) / PR-TR (>>1999)

FAC 22CC (>>2000) / MAGNUM E-TECH 400/440/480

AE390/420T/430/470/560



Fig.	CEI no.	Rif. RVI	Description	Description	Q.ty	Note
1	280.645	56 00 584 804	Différentiel 14x37 R.=1:2,64	Central Gear 14x37 R.=1:2,64	1	100 km/h
1	280.634	56 00 584 805	Différentiel 13x37 R.=1:2,85	Central Gear 13x37 R.=1:2,85	1	93 km/h
1	280.643	56 00 584 806	Différentiel 12x37 R.=1:3,08	Central Gear 12x37 R.=1:3,08	1	86 km/h
1	280.642	56 00 584 807	Différentiel 11x37 R.=1:3,36	Central Gear 11x37 R.=1:3,36	1	79 km/h
1	280.640	56 00 584 808	Différentiel 10x37 R.=1:3,70	Central Gear 10x37 R.=1:3,70	1	71 km/h
1	280.638	56 00 584 809	Différentiel 9x37 R.=1:4,11	Central Gear 9x37 R.=1:4,11	1	64 km/h
1	280.633	56 00 584 810	Différentiel 8x37 R.=1:4,62	Central gear 8x37 R.=1:4,62	1	57 km/h
1	280.635	56 00 584 811	Différentiel 7x37 R.=1:5,28	Central Gear 7x37 R.=1:5,28	1	50 km/h
2	187.724	50 10 241 239	Ecrou	Nut	1	
3	197.147	50 10 319 124	Bride de sortie	Output Flange	1	
4	155.228	50 10 319 125	Bride de sortie	Output Flange	1	
5	139.758	50 10 534 863	Bague etancheite	Oil seal	1	
6	130.708	50 10 241 401	Roulement à rouleaux D.65x130x37	Roller bearing D.65x130x37	1	
7	175.301	50 10 319 040	Carter roulement	Bearing housing	1	
8	269.025	CEI 269025	Entretoise E.0,20 mm	Shim T.0,20 mm	1	
8	269.023	50 10 319 042	Entretoise E.0,25 mm	Shim T.0,25 mm	0	
8	269.024	50 10 319 043	Entretoise E.0,30 mm	Shim T.0,30 mm	0	
8	269.077	50 10 319 044	Entretoise E.0,40 mm	Shim T.0,40 mm	0	
8	269.078	50 10 319 045	Entretoise E.0,50 mm	Shim T.0,50 mm	0	
8	269.079	50 10 319 046	Entretoise E.0,60 mm	Shim T.0,60 mm	0	
8	269.080	50 10 319 047	Entretoise E.0,70 mm	Shim T.0,70 mm	0	
8	269.081	50 10 319 048	Entretoise E.1,00 mm	Shim T.1,00 mm	0	
9	269.020	50 10 241 287	Entretoise E.20,20 mm	Shim T.20,20 mm	0	
9	269.021	50 10 241 288	Entretoise E.20,22 mm	Shim T.20,22 mm	0	
9	269.022	50 10 241 289	Entretoise E.20,24 mm	Shim T.20,24 mm	0	
9	269.026	CEI 269026	Entretoise E.20,26 mm	Shim T.20,26 mm	1	
9	269.027	CEI 269027	Entretoise E.20,28 mm	Shim T.20,28 mm	1	
10	130.709	50 10 319 751	Roulement à rouleaux D.70x165x57	Roller bearing D.70x165x57	1	
11	194.672	56 00 584 418	Couple conique 14x37 R.=1:2,64	Crown & Pinion 14x37 R.=1:2,6	1	100 km/h
11	194.676	56 00 584 417	Couple conique 13x37 R.=1:2,85	Crown & Pinion 13x37 R.=1:2,8	1	93 km/h
11	194.671	56 00 594 926	Couple conique 12x37 R.=1:3,08	Crown & Pinion 12x37 R.=1:3,0	1	86 km/h
11	194.675	56 00 594 925	Couple conique 11x37 R.=1:3,36	Crown & pinion 11x37 R.=1:3,36	1	79 km/h
11	194.670	56 00 594 924	Couple conique 10x37 R.=1:3,70	Crown & pinion 10x37 R.=1:3,70	1	71 km/h
11	194.674	56 00 594 923	Couple conique 9x37 R.=1:4,11	Crown & Pinion 9x37 R.=1:4,11	1	64 km/h
11	194.597	56 00 584 855	Couple conique 8x37 R.=1:4,62	Crown & pinion 8x37 R.=1:4,62	1	57 km/h
11	194.673	56 00 594 921	Couple conique 7x37 R.=1:5,29	Crown & Pinion 7x37 R.=1:5,29	1	50 km/h
12	130.299	50 10 241 406	Roulement D.45x100x36	Roller bearing D.45x100x36	1	
13	269.030	50 10 319 102	Rondelle	Washer	1	
14	111.268	77 03 066 096	Bague d'arret	Snap ring	1	
15	199.254	50 10 241 942	Carter différentiel	Differential Housing	1	
16	187.732	50 10 241 210	Ecrou	Adjusting ring	1	
17	130.712	50 10 534 616	Roulement D.114,3x177,8x41,3	Roller Bearing D.114,3x177,8x41	1	
18	187.731	50 10 319 133	Vis M16X1.5	Screw M16X1.5	16	
19	175.297	50 10 319 613	Demi-carter différentiel	Differential Housing Half	1	
20	169.993	50 10 319 562	Rondelle	Thrust Washer	2	

Notes

Date

06 / 2008

Table

0100

